

# Town of Selma Fire Department

## 2020 Report



# Making Bad Days Better

The Selma Fire Department continues to be dedicated to Emergency Services throughout Selma and the surrounding communities. Our Firefighters continue to lead in the areas of strong, aggressive delivery of our life saving service. Over the past year, through the support of the Selma Town Council, we have met a major goal of the past several years. We have a career staff that has met the first part of NFPA 1720; a four-person crew available 24 hours per day. As you will see throughout this document, this has increased our ability to not only arrive on scene faster and with more abilities, but also increase our abilities at all levels such as Fire and Life Safety Education, Smoke Detector Installation, Child Passenger Safety, Training, Certification Delivery, and Infrastructure Maintenance.

Although our Volunteer Firefighter numbers have decreased over the past several years, we have transitioned our volunteer firefighting force to meet the needs of a combination Department with emphasis on staffing the station vs a response for every call.

2020 has been a challenging year as it has been for our entire community. The pandemic has forced us to look at our business in a different light, balancing the public's safety as well as our Firefighters' safety. We faced an unknown enemy in COVID-19 and did the best we could with the information available. Through out this trying time, service was delivered to our citizens through safe and efficient operations with no cuts in service. Our staff has continued to be safe through diligent safety precautions and undoubtedly some luck.

In 2020 we received the coveted SAFER Grant for Volunteer Recruitment and Retention. 2021 will see an emphasis on Volunteer Firefighters. Our motto is get off the couch and "GET ON THE TRUCK"

Our greatest attribute is of course our Firefighters. This group of fine men is unparalleled in their passion and knowledge of this noble profession. Anywhere and anytime in Selma, you can call 911 when you have your worst day. Within 5 minutes, a Fire Engine with 4 professional Firefighters will arrive with only one question: How can we help you? That is true service. All of this is provided to our citizens at a cost of less than 25 cents per day per citizen.

As always, your Fire Station is open to the public 24 hours per day. We are here to serve and enjoy our public interaction. Please feel free to come by the Firehouse and visit.

Respectfully,

*Phillip McDaniel*

Town of Selma Fire Chief

## **2020 Run Numbers**

**1,119 Total Emergency Responses**

**64 Building Fires**

**20 Outside Fires**

**16 Vehicle Fires**

**73 Fire Alarms**

**23 Electrical Incidents**

**12 Rescue Calls**

**590 EMS Calls**

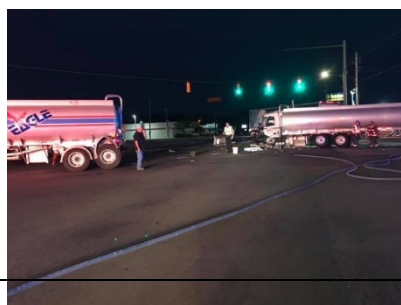
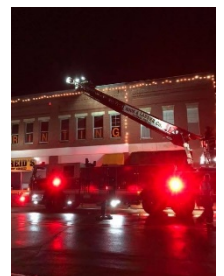
**133 Vehicle Accidents**

**10 Vehicle Pin In's**

**11 Hazardous Materials**

**142 Public Assistance**

**24 Storm Responses**



## Fire Prevention & Life Safety Public Education

Selma Firefighters Made **279** Contacts in 2020

Most of the events of 2020 were held virtually, but our

Efforts remained to bring as much fire and life safety education to selma as possible.

**40** Smoke Detectors Installed

**127** Fire Inspections Completed

**37** Car Seats Installed/demonstrated

**4182** Followers on Facebook

Visit us on Facebook [www.Facebook.com/SelmaFireDept](https://www.Facebook.com/SelmaFireDept)



# Training

The Greatest Tool of a Firefighter  
Is their Training!

Selma Firefighters Completed

**2902** Hours of Training

**13** NC Certification Courses Offered



## Response Statistics

Fire Losses \$289,350 Pre-Incident Value \$3,200,750

Selma Firefighters Saved **\$2,911,400** in Property Value!

Average Response Time (Dispatch to On Scene) **4:06**

Average Turn Out Time (Dispatch to Wheels Rolling) **0:49**

Average Time Spent on Scene **22:38**

Average Firefighters On Scene at Major Calls **11** (Goal is 15)



## **Facts About Selma Fire Department**

**20 Volunteer Firefighters Receiving a Small Per Call Stipend and Pulling Shifts to Ensure Full Staffing**

**9 Full Time Shift Firefighters (3 Per Day 24/7)**

**3 Are Partially Funded by a Federal Grant**

**1 Part Time Firefighter**

**1 Full Time Chief**

**17 Volunteer Firefighters take part in our Duty Crew System**

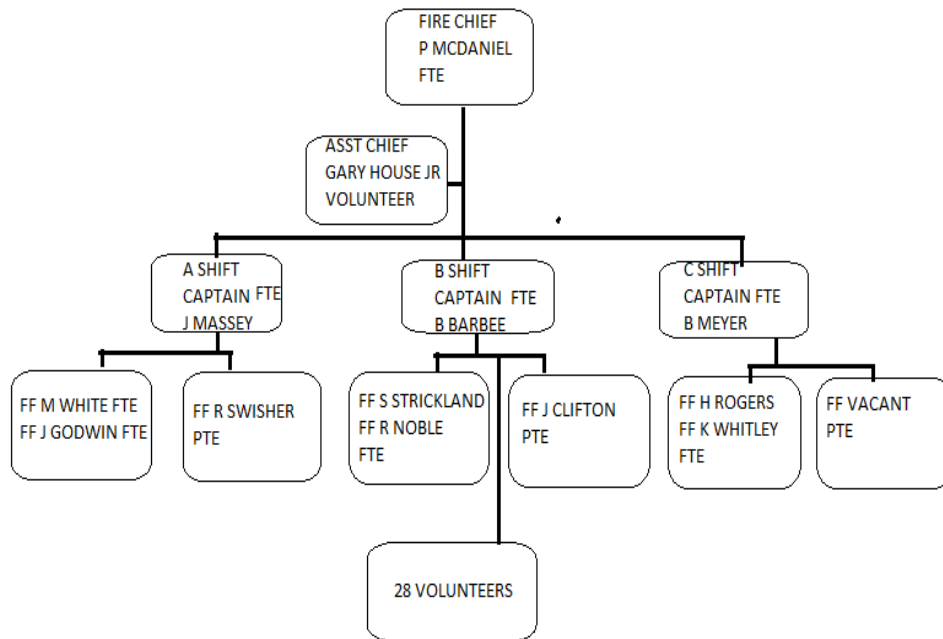
**The Average Volunteer Firefighter Pulls 400 Hours of Initial Basic Training in Their First 18 Months**

**Selma Fire Department is an Approved Delivery Agency Through NC OSFM, Meaning We Can Offer NC Certification Classes in House Free of Charge. We are the Only Department in Johnston County with this Designation**

**Tasks Completed by Shift Firefighters: Emergency Reporting, Training, Hydrant Maintenance, Vehicle Maintenance, Building Maintenance, Hose Testing, Pump Testing, Fire prevention, Town Departments Assistance.**



## Fire Department Current Staffing Model



## **What Does it Truly Take to Extinguish a House Fire?**

National Fire Protection Agency (NFPA) 1710 and 1720 is a document that answers this very question. Experts in the field use a third-party testing group called the National Institute of Standards and Technology to gather scientific data to offer facts to develop this document. It gives us Best Practices and recommended standards on Company size, total number of Firefighters on a scene, and time frames to be on scene and accomplish particular tasks. NFPA is the Industry Standard in the Emergency Services Arena.

Below is a link for a short video that explains these needs. I encourage all of our citizens and leaders to watch and share.

<https://youtu.be/f42S9TRc634>

The logo for NFPA 1710. The text "NFPA" is in a red, serif font with a registered trademark symbol, and "1710" is in a large, gold, 3D-style font. The background is a light blue gradient with faint, stylized fire flames.The tagline "THE INDUSTRY STANDARD FOR CAREER FIRE DEPARTMENTS" is written in a black, hand-drawn, sans-serif font. The words "THE INDUSTRY STANDARD" are on the first line, and "FOR CAREER FIRE DEPARTMENTS" is on the second line. The text is set against a yellow, brush-stroke-like background.

The Selma Fire Department is Grateful for the ability to serve and carry out our Life Saving Mission. Our Firefighters are dedicated to this Town with our guiding principle:

**“Citizens First”**

As good as we are, we have many deficiencies to overcome. Our Firefighters are the lowest paid in our area, our Fleet is aging, and our ability to recruit Volunteers from this community is dwindling. Our budget and Salaries are not comparable to our counterparts, but we still provide more services at a higher output than most others in the area. Below are a few comparisons:

Dept	Budget	Full Time Personnel
Selma	\$ 791,846.00	3 per day 1 Chief Officer
Smithfield	\$ 2,169,318.00	6 per day 2 Chief Officer 1 Inspector 1 Admin
Clayton	\$ 3,697,775.00	12 per day 2 Chief Officer 2 Inspectors 1 Admin
Benson	\$ 663,993.00	1 per day 1 Chief Officer
Zebulon	\$ 1,451,345.00	4 per day 2 Chief Officer 1 Inspector
Archer Lodge	\$ 1,231,257.00	3 Per day 1 Chief Officer
Cleveland	\$ 2,005,465.00	4 Per Day 2 Chief Officer
Wilson Mills	\$ 1,160,034.00	0 Per day

Town	Firefighter	Engineer	Captain	P/T FF
Selma	33748		43072	10.00
Benson	37,500	N/A	N/A	12.00
Smithfield	35883	39596	48152	10.00
Raleigh	38058			
Garner	40144	48797	56514	
Archer Lodge	N/A	39000	44000	
Zebulon	37243	43113	47533	13.50
Clayton	39351	45553	52733	
Wilson	35409			
Cary	42000	52832	58260	
Cleveland	38580	44661	51701	13.00

# GET ON THE TRUCK



VOLUNTEER FIREFIGHTERS  
WANTED

[WWW.SELMA-NC.COM](http://WWW.SELMA-NC.COM)