

# SELMA TRACKS

Official Newsletter of the Town of Selma



## WANT TO HEAR UPDATES & EMERGENCY NOTIFICATIONS?



CALL THE TOWN HALL AT 919-965-9841 AND DIAL "0" FOR WEEKLY RECORDINGS AND EMERGENCY ANNOUNCEMENTS.



SIGN UP FOR MONTHLY NEWSLETTERS & ALERTS! ON OUR WEBSITE AT SELMA-NC.COM

## SAVE THE DATE

Selma Lions Club, Town of Selma & Hinnant Family Vineyards Present:

April 25, 2025 | 5pm - 9pm  
Downtown Selma

WINE WALK SPONSORS:



### 3rd Annual Selma Wine Walk



Participants will receive a complimentary wine glass!



## Town of Selma Earth Day Cleanup



LET'S KEEP SELMA BEAUTIFUL!

Saturday, April 26th  
MORE DETAILS TO FOLLOW!

## TOWN OF SELMA EMPLOYEMENT OPPORTUNITIES!

### Current Vacancies:

- Police Officer
- Senior Maintenance Worker
- Sanitation Operator
- Planning Admin Specialist
- Planning Technician

### Continuous Vacancies:

- Customer Service Representative
- Firefighter
- Recreation Assistant (Part-Time)



## ROCKIN' ON RAIFORD CONCERT SERIES



3RD THURSDAY OF EACH MONTH FROM MARCH - SEPTEMBER!  
*Downtown Selma*



# PUBLIC WORKS REGULATIONS AND VIOLATIONS



**CODE ENFORCEMENT WILL CONTINUE CONDUCTING ROUTINE INSPECTIONS OF ALL COLLECTION SERVICES.  
VIOLATION FINES WILL BEGIN ACCOMPANYING TAGGED CARTS.**



**GARBAGE CART LIDS MUST BE COMPLETELY CLOSED.**

EXCESSIVE TRASH FINES WILL FOLLOW VIOLATIONS FOR OVERFLOWING CARTS. THIS INCLUDES THOSE UNABLE TO CLOSE COMPLETELY AND ANY FOUND WITH GARBAGE PILED AROUND THE EXTERIOR OF THE CART.

**RECYCLING CARTS MUST NOT CONTAIN NON-RECYCLABLES.**

NON-RECYCLABLES FOUND IN RECYCLING CARTS CONTAMINATE THE ENTIRE LOAD. VIOLATION FINES WILL BE CHARGED, AND CARTS WILL BE REMOVED FOLLOWING MULTIPLE FINDINGS OF CONTAMINATION. PLEASE NOTE: RECYCLING CARTS ARE NOT ADDITIONAL GARBAGE CARTS. RECYCLING ANNUAL OPT-IN PERIOD OCCURS DURING THE MONTH OF JUNE EACH YEAR.

**CARTS MUST NOT BE PUT BY THE ROAD TOO EARLY OR LEFT OUT TOO LONG AND MUST BE RETURNED TO APPROPRIATE STORAGE SPACES.**

CARTS MUST BE IN PLACE THE NIGHT BEFORE YOUR SCHEDULED COLLECTIONS DAY. THEY MUST BE RETURNED TO AN APPROPRIATE STORAGE LOCATION NO LATER THAN 7:00PM FOLLOWING COLLECTIONS. CARTS CANNOT BE STORED IN FRONT OF THE FRONT DOOR LINE OF YOUR PROPERTY.

**METERS MUST NOT BE BLOCKED BY VEHICLES OR OTHER OBJECTS.**

FINES WILL BE ADDRESSED TO THOSE BLOCKING UTILITY METERS. IMPROPERLY PLACED VEHICLES AND OTHER OBJECTS MAKE IT IMPOSSIBLE FOR THE UTILITY DEPARTMENT TO PULL A READ ON A METER. PLEASE ENSURE YOU DO NOT PARK NEARBY, ON TOP OF YOUR METER, OR THE METER OF YOUR NEIGHBOR.

**CARTS MUST BE PLACED IN A PROPER LOCATION FOR COLLECTIONS AND MUST NOT BE BLOCKED BY OR PLACED TOO CLOSE TO OBJECTS.**

CARTS MUST NOT BE MORE THAN 2 FEET FROM THE ROAD, THERE MUST BE AT LEAST 2 FEET OF SPACE AROUND EACH CART AND THEY CANNOT BE BLOCKED BY VEHICLES OR OBJECTS! VIOLATIONS WILL BE ASSIGNED, AND BLOCKED GARBAGE/RECYCLING WILL NOT BE COLLECTED.

**PILES OF LEAVES MUST BE SEPARATE FROM OTHER YARD DEBRIS AND GARBAGE.**

PILES OF LEAVES FOUND TO HAVE STICKS AND OTHER OBJECTS HAVE CAUSED MAINTENANCE ISSUES WITH OUR NEW EQUIPMENT. PILES FOUND TO HAVE THESE OBJECTS WILL NOT BE PICKED UP.

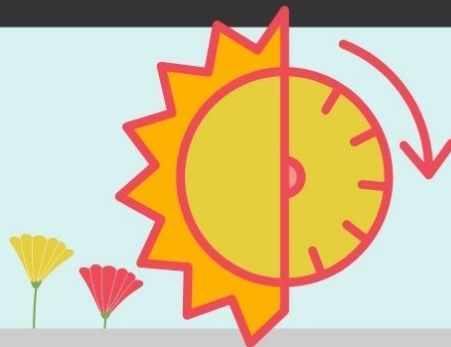
**DEBRIS PILES AND BULK ITEMS MUST NOT EXCEED TWO SCOOPS OR APPROXIMATELY 12 CUBIC FEET FOR EACH SCHEDULED COLLECTION.**



***NO TIRES, APPLIANCES OR LOOSE TRASH SHOULD BE PLACED BY THE ROAD!  
PLEASE CONTACT TOWN HALL TO NOTIFY OF A BULK COLLECTION REQUEST.***



**DAYLIGHT SAVINGS TIME TAKES  
PLACE ON SUNDAY, MARCH 9TH.  
DON'T FORGET TO SPRING THOSE  
CLOCKS FORWARD BY ONE HOUR!**



## **MARK YOUR CALENDARS!**

- ROCKIN' ON RAIFORD #1 - THURSDAY, MARCH 20TH
- SELMA BAPTIST EASTER BREAKFAST- SATURDAY, APRIL 12TH
- LION'S CLUB WINE WALK - FRIDAY, APRIL 25TH

**Upcoming Town Council Meetings:**

**March 6th and March 11th  
JERNIGAN BUILDING AT 6:00PM**

