

**SEPTEMBER 29<sup>TH</sup> - OCTOBER 5<sup>TH</sup>**

**50<sup>TH</sup> ANNUAL  
SELMA RAILROAD  
EST. DAYS 1975**



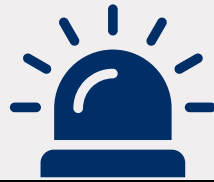
**THE ANNUAL SELMA RAILROAD DAYS PARADE WILL ALSO TAKE PLACE ON  
SATURDAY, OCTOBER 4<sup>TH</sup> STARTING AT 10:30AM IN DOWNTOWN SELMA!**

**Tracks Quarterly  
NEWSLETTER  
FALL 2025**



# WANT TO HEAR UPDATES & EMERGENCY NOTIFICATIONS?

CALL TOWN HALL AT 919-965-9841 AND PRESS "0" TO HEAR WEEKLY UPDATES AND EMERGENCY ANNOUNCEMENTS FROM THE MAYOR HIMSELF! RECORDINGS ARE UPDATED REGULARLY TO KEEP YOU INFORMED AND UP TO DATE ON CURRENT INFORMATION!



# GARBAGE & RECYCLING FOR HOLIDAYS

TRASH & RECYCLING PICKUP WILL STAY ON SCHEDULE FOR ALL HOLIDAYS—EXCEPT THANKSGIVING AND CHRISTMAS!



## JOIN OUR TEAM



**APPLY TODAY!**



**VISIT SELMA-NC.COM!**

## TOWN OF SELMA EMPLOYMENT OPPORTUNITIES!

### CURRENT VACANCIES:

POLICE OFFICER  
FIRE INSPECTOR (PART-TIME)  
CHIEF FINANCE OFFICER  
CUSTODIAN  
ATHLETIC SUPERVISOR  
SENIOR MAINTENANCE WORKER (PUBLIC WORKS)  
SCHOOL RESOURCE OFFICER (SRO)

CONTINUOUS VACANCIES: CUSTOMER SERVICE REPRESENTATIVE, FIREFIGHTER, RECREATION ASSISTANT (PART-TIME)

## TOWN OF SELMA BOARD POSITIONS NOW AVAILABLE!

### PLANNING BOARD

ONE (1) TOWN LIMIT VACANCY  
RECREATION ADVISORY BOARD

TWO (2) ETJ VACANCIES

### APPEARANCE COMMISSION

ONE (1) ETJ VACANCY

ONE (1) TOWN LIMIT VACANCY

### BOARD OF ADJUSTMENT

ONE (1) ETJ VACANCY (ALT.)

TWO (2) TOWN LIMIT VACANCY (ALT.)

TO LEARN MORE:



## SUBSCRIBE TO TOWN EMAILS & TEXT MESSAGES!

TOWN NEWSLETTERS & ALERTS WILL NOW BE SHARED ELECTRONICALLY. BE SURE TO SUBSCRIBE BY VISITING [SELMA-NC.COM](http://SELMA-NC.COM), SCANNING THE QR CODE, OR BY VISITING ONE OF OUR TOWN OF SELMA OFFICES, WHERE A TOWN OF SELMA STAFF MEMBER WILL BE HAPPY TO HELP YOU GET SIGNED UP!

SUBSCRIBE





PARADE

VENDORS

CARNIVAL

CAR SHOW



SEPTEMBER 29<sup>TH</sup> - OCTOBER 5<sup>TH</sup>

# 50<sup>TH</sup> ANNUAL SELMA RAILROAD EST. DAYS 1975

FOLLOW OUR FACEBOOK  
PAGE TO STAY UP TO DATE  
AS WE UNVEIL EVERYTHING  
THIS UNFORGETTABLE  
FESTIVAL HAS IN STORE!



facebook

DOWNTOWN SELMA

LIVE MUSIC

MODEL TRAINS

FOOD TRUCKS



SEPTEMBER 27<sup>TH</sup> 2025

LIVE AT  
THE RUDY THEATRE

Applications  
now  
Available!



2025  
Miss Selma  
Railroad Days  
Pageant

Apply Now!



BABY MISS (12 MONTHS-2 YEARS OLD)  
WEE MISS (3-4 YEARS OLD)  
TINY MISS (5-6 YEARS OLD)  
LITTLE MISS (7-9 YEARS OLD)  
JUNIOR MISS (10-12 YEARS OLD)  
TEEN MISS (13-15 YEARS OLD)  
MISS (16-18 YEARS OLD)



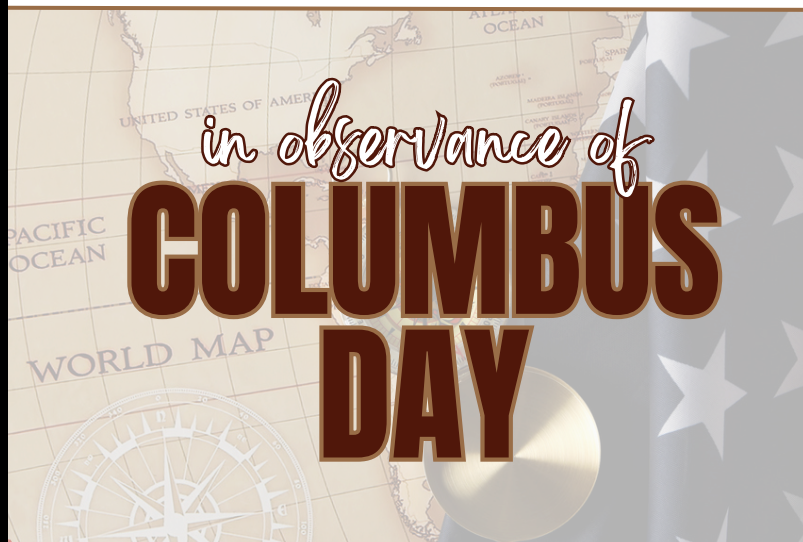
**TOWN OF SELMA OFFICES AND THE SELMA PUBLIC LIBRARY WILL BE CLOSED ON MONDAY, SEPTEMBER 1<sup>ST</sup>**



**OFFICES AND THE LIBRARY WILL REOPEN ON TUESDAY, SEPTEMBER 2<sup>ND</sup>. TO REPORT UTILITY ISSUES AFTER HOURS OR ON HOLIDAYS, PLEASE CALL (919) 934-9411**



**TOWN OF SELMA OFFICES AND THE SELMA PUBLIC LIBRARY WILL BE CLOSED ON MONDAY, OCTOBER 13<sup>TH</sup>**



**OFFICES AND THE LIBRARY WILL REOPEN ON TUESDAY, OCTOBER 14<sup>TH</sup>. TO REPORT UTILITY ISSUES AFTER HOURS OR ON HOLIDAYS, PLEASE CALL (919) 934-9411**



# SELMA OPEN FORUM

PLEASE JOIN US ON  
SATURDAY, AUGUST 9, 2025  
AT 1:00 PM



**THE SELMA JERNIGAN BUILDING  
110 E ANDERSON STREET, SELMA**

PUBLIC IS WELCOME.  
FORUM WILL NOT BE TELEVISED.



**BE ON THE LOOKOUT FOR  
WINTER SPORTS  
REGISTRATIONS!!!**



**FOLLOW OUR SELMA PARKS AND RECREATION FACEBOOK  
PAGE OR VISIT: [SELMA-NC.COM/PROGRAMS/PARKS-REC/](https://www.selma-nc.com/programs/parks-rec/)  
FOR MORE INFORMATION!**



# ROCKIN' ON RAIFORD CONCERT SERIES

*Downtown Selma*

LAST DATE OF THE YEAR: SEPTEMBER 18<sup>TH</sup>



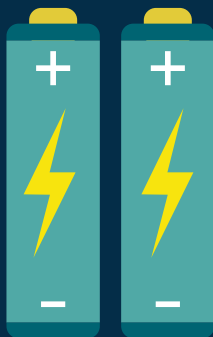


# BUILDING COMMUNITY THROUGH PLAY!



**THE SELMA POLICE DEPARTMENT EXTENDS A HEARTFELT THANK YOU TO JENNY LYNNE PARRISH WITH PROJECT *INASMUCH* FOR HER GENEROUS DONATION OF 55 BASKETBALLS, FOOTBALLS, SOCCER BALLS, AND COLORFUL PLAY BALLS. THIS THOUGHTFUL GIFT WILL HELP FOSTER POSITIVE INTERACTIONS BETWEEN OUR OFFICERS AND THE COMMUNITY—ONE GAME AT A TIME.**

## CHARGE INTO FIRE SAFETY!



**FPW 2025**  
**FIRE PREVENTION WEEK**

**LITHIUM-ION  
BATTERIES**

**IN YOUR  
HOME**

## FIRE PREVENTION WEEK 2025

**OCTOBER 5<sup>TH</sup> - 11<sup>TH</sup>**

**BE SURE TO CHARGE, STORE, AND  
DISPOSE LITHIUM-ION BATTERIES  
PROPERLY.**

**CALL THE SELMA FIRE  
DEPARTMENT FOR ASSISTANCE!**

**919-965-2697**

# REMINDER: UPDATED ORDINANCES

**CARTS CANNOT BE PLACED BY THE ROAD BEFORE 4PM THE DAY PRIOR TO YOUR SCHEDULED COLLECTIONS & THEY MUST BE REMOVED NO LATER THAN 8AM THE DAY AFTER COLLECTIONS.**

**WHEN CARTS ARE NOT OUT FOR COLLECTIONS, ALL CARTS MUST BE STORED BEHIND THE THRESHOLD OF THE FRONT DOOR OF YOUR RESIDENCE.**

**GARBAGE CART LIDS MUST BE COMPLETELY CLOSED, NO BAGS OR LOOSE TRASH LEFT BY THE CURB OR PILED AROUND CART!**



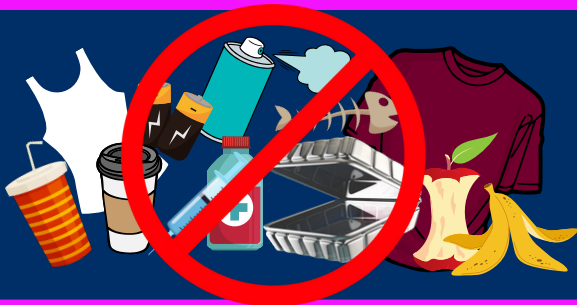
**ALWAYS REMEMBER  
FOR ALL CARTS, PILES, & BULK  
OBJECTS!**



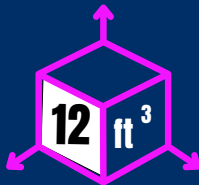
**THE 2-FEET RULE!  
2 FEET FROM CURB, 2 FEET  
APART, & 2 FEET FROM OBJECTS!**



**RECYCLING CARTS MUST NOT CONTAIN NON-RECYCLABLES, THEY ARE NOT ADDITIONAL GARBAGE CARTS OR PERSONAL STORAGE CONTAINERS.**



**NO TIRES, APPLIANCES, OR CONSTRUCTION DEBRIS WILL BE COLLECTED BY THE TOWN, BULK WASTE PILES MUST NOT EXCEED SIZE LIMITS AND LARGER ITEMS SHOULD NEVER BE USED TO HOLD BAGS OF GARBAGE OR LOOSE OBJECTS.**



**EXAMPLES OF APPROPRIATE  
BULK PICKUP ITEMS**



**1 SET OF  
MATTRESSES**

**OR**



**1 DRESSER**

**OR**



**1 COUCH**



**YARD WASTE & BULK WASTE SHOULD NOT EXCEED 12 CUBIC FEET IN SIZE! LARGER ITEMS SHOULD NEVER BE USED TO HOLD EXCESS TRASH OR LOOSE OBJECTS.**

**LEAF PILES CANNOT BE COMBINED WITH OTHER YARD DEBRIS OR GARBAGE AND MUST BE 2 FEET FROM CURB AND OTHER OBJECTS! YARD WASTE CANNOT BE BAGGED OR IN BUCKETS AND MUST BE EASILY ACCESSIBLE FOR EQUIPMENT.**



**>>> DON'T FORGET THE TWO FEET RULE! <<<**



**CONTACT [PUBLIC-WORKS@SELMA-NC.COM](mailto:PUBLIC-WORKS@SELMA-NC.COM) FOR MORE INFORMATION!**



# **PLANNING & ZONING FAQ'S**

## **1. WHERE CAN I FIND PERMIT APPLICATIONS?**

**A.** [WWW.SELMA-NC.COM/ECONOMIC-DEVELOPMENT/PERMITS/](http://WWW.SELMA-NC.COM/ECONOMIC-DEVELOPMENT/PERMITS/)

## **2. WHAT IF I AM NOT SURE IF I NEED A PERMIT? OR IF I HAVE OTHER PLANNING RELATED QUESTIONS?**

**A.** YOU CAN SEND AN EMAIL TO [PLANNING-DEPARTMENT@SELMA-NC.COM](mailto:PLANNING-DEPARTMENT@SELMA-NC.COM) OR YOU CAN CALL (919)-965-9841 EXT. 8003.

## **3. HOW MUCH DOES THIS PERMIT COST?**

**A.** THIS AMOUNT CAN BE FOUND ON THE PERMIT APPLICATION OR IN THE TOWN'S FEE SCHEDULE.

## **4. WHAT ARE THE MOST COMMON PERMIT APPLICATIONS?**

**A.** THE ZONING PERMIT (SINGLE-FAMILY OR DUPLEX RESIDENTIAL)

**B.** CERTIFICATE OF APPROPRIATENESS (COA)

**C.** MAJOR OR MINOR SITE PLAN-COMMERCIAL

**D.** SPECIAL EVENT APPLICATIONS

## **5. HOW ARE PERMITS ISSUED?**

**A.** PERMITS ARE ISSUED BASED ON COMPLIANCE WITH THE EXISTING TOWN OF SELMA CODE AND COMPLETENESS OF THE APPLICATION.

## **6. WHAT ZONE IS MY PROPERTY?**

**A.** YOU CAN FIND THE ZONING OF YOUR PROPERTY BY USING THE JOHNSTON COUNTY GIS MAPCLICK INTERFACE.

## **7. WHAT IS THE DIFFERENCE BETWEEN A ZONING PERMIT AND A BUILDING PERMIT?**

**A.** RECEIVING A ZONING PERMIT IS THE FIRST STEP IN THE DEVELOPMENT PROCESS. IN MOST CASES, THIS IS THEN FOLLOWED BY RECEIVING A BUILDING PERMIT WITH JOHNSTON COUNTY BUILDING INSPECTIONS.

## **8. WHAT DO I DO AS A NEW TENANT FOR A BUSINESS?**

**A.** FILL OUT A ZONING PERMIT (COMMERCIAL USE/ UPFIT AND TENANT CHANGE) APPLICATION. ALSO FILL ONE OUT WITH JOHNSTON COUNTY TO HAVE A FIRE INSPECTION COMPLETED. THIS IS OF COURSE IF THERE IS NO USE CHANGE. IF THAT IS THE CASE, YOU WILL NEED TO FILE FOR A COMMERCIAL USE CHANGE AS WELL.

## **9. DO I NEED A PERMIT FOR A SHED?**

**A.** YES! A SHED QUALIFIES AS AN ACCESSORY STRUCTURE.

## **10. WHAT ARE THE REQUIREMENTS FOR A FENCE?**

**A.** FENCE REQUIREMENTS CAN BE FOUND IN OUR UDO, APPENDIX C – LANDSCAPING 5. FENCES AND WALLS. OUR UDO CAN BE FOUND AT [HTTPS://SELMA-NC.COM/ECONOMIC-DEVELOPMENT/UNIFIED-DEVELOPMENT-ORDINANCE/](https://selma-nc.com/economic-development/unified-development-ordinance/)

**TO VIEW OUR FULL PLANNING & ZONING  
FAQ, PLEASE SCAN THE QR CODE!**



## CONTACT TOWN DEPARTMENTS BY EMAIL!

MAYOR@SELMA-NC.COM  
TOWN-CLERK@SELMA-NC.COM  
CUSTOMER-SERVICE@SELMA-NC.COM  
PLANNING-DEPARTMENT@SELMA-NC.COM  
CODE-ENFORCEMENT@SELMA-NC.COM  
POLICE-DEPARTMENT@SELMA-NC.COM  
FIRE-DEPARTMENT@SELMA-NC.COM  
PUBLIC-WORKS@SELMA-NC.COM  
WATER-SEWER@SELMA-NC.COM  
ELECTRIC-DEPARTMENT@SELMA-NC.COM  
PARKS@SELMA-NC.COM  
EVENTS@SELMA-NC.COM  
HUMAN-RESOURCES@SELMA-NC.COM



## CONTACTS

EMERGENCY: CALL 911  
POLICE, FIRE/NON-EMERGENCY: (919) 934-9411  
TOWN HALL: (919) 965-9841  
TOWN CLERK: EXT. 1001  
HUMAN RESOURCES: EXT. 1005  
UTILITIES/CUSTOMER SERVICE: EXT. 1003  
CEMETARY SALES: EXT. 1004  
PLANNING/PERMITS: EXT. 8003  
PUBLIC WORKS: EXT. 1004  
ELECTRIC: (919) 965-8981  
WATER/SEWER: (919) 965-2244  
PARKS & RECREATION: (919) 975-1411  
LIBRARY: (919) 965-8613  
POLICE: (919) 965-8189  
FIRE: (919) 965-2697



@TOWNOFSELMANC



TOWN HALL - 212 N. Raiford Street

FINANCE BUILDING - 114 N. Raiford Street

### TOWN MANAGER

Alexis Carter

### MAYOR

Byron James McAllister

### TOWN CLERK

Dalton Larsen-Batten

### MAYOR PRO-TEM

Joseph Scarboro

### TOWN ATTORNEY

Alan "Chip" Hewett

### COUNCILMEMBERS

William Overby  
Amy West Whitley  
Susan Parrish Watson

# 2025 EVENTS

JAN 25	POLAR BEAR 5K RUN
FEB 7	DADDY/DAUGHTER DANCE
FEB 22	SOUL FOOD FESTIVAL
MAR 20	ROCKIN' ON RAIFORD
APR 12	SELMA BAPTIST EASTER BREAKFAST & SCAVENGER HUNT
APR 17	ROCKIN' ON RAIFORD
APR 25	SELMA LIONS CLUB - WINE WALK
APR 26	EARTH DAY CLEANUP EVENT
MAY 01	SELMA FOUNDERS DAY
MAY 04	HISPANIC HERITAGE/CINCO DE MAYO CELEBRATION
MAY 09	SELMA SENIOR DAY
MAY 15	ROCKIN' ON RAIFORD
JUN 07	NC UNDERGROUND TOY SHOW
JUN 19	ROCKIN' ON RAIFORD
JUN 20-21	ENDLESS 301 YARD SALE
JUN 21	JUNETEENTH CELEBRATION
JUN 30	ALL-AMERICAN FESTIVAL
JUL 04	DOWNTOWN FIREWORKS
JUL 17	ROCKIN' ON RAIFORD
AUG 21	ROCKIN' ON RAIFORD
SEP 18	ROCKIN' ON RAIFORD
SEP 20	RAILROAD DAYS RUN
SEP 27	RAILROAD DAYS PAGEANT
SEP 29 - OCT 05	 50TH ANNUAL SELMA RAILROAD DAYS
OCT 31	DOWNTOWN SELMA SPOOKTACULAR!
DEC 02	SELMA CHRISTMAS CELEBRATION

## UPCOMING TOWN COUNCIL MEETINGS

- AUGUST: AUGUST 7<sup>TH</sup> & 12<sup>TH</sup>
- SEPTEMBER: SEPTEMBER 4<sup>TH</sup> & 9<sup>TH</sup>
- OCTOBER: OCTOBER 9<sup>TH</sup> & 14<sup>TH</sup>

## NEXT OPEN FORUM

- SATURDAY, AUGUST 9<sup>TH</sup> AT 1PM

ALL MEETINGS TAKE PLACE IN THE SELMA JERNIGAN BUILDING

VISIT SELMA-NC.COM FOR MORE INFORMATION!